



Beaufort County Public Works
Stormwater Infrastructure
Project Summary

Project Summary: Fair Road and Riley Road

Project #: 2010-194 Completed: Jul-10

Narrative Description of Project:
 Project improved 1,884 L.F. of drainage system. Bush hogged 1,366 L.F. of outfall ditch and workshelf. Shinn cut and constructed 518 L.F. of outfall ditch and workshelf. Grubbed 100 L.F. of outfall ditch. Cleaned out 800 L.F. of outfall ditch. Installed (3) bleeder pipe, (1) access pipe and (1) access gate. Installed rip rap and hydroseeded for erosion control.

Material Cost, Rental Equipment Summary, and Labor

Material	Unit	Cost/Unit	Qty	Cost
12" HDPE Pipe	linear feet	\$4.86	60.0	\$291.60
24" HDPE Pipe	linear feet	\$13.88	40.0	\$555.20
Fill Dirt	ton	\$1.00	212.1	\$212.10
Rip Rap	ton	\$43.87	29.8	\$1,308.20
Silt Fence	sy	\$0.78	3.5	\$2.73
Filter Blanket	sy	\$0.63	55.6	\$35.00
Turf Staple	each	\$0.03	50.0	\$1.50
10-10-10 Fertilizer	bag	\$11.72	3.5	\$41.02
Hydromulch	bale	\$12.22	7.0	\$85.54
Hydrogel	cup	\$2.82	3.5	\$9.87
Hydromax Liquid Fertilizer	cup	\$2.54	3.5	\$8.89
Brown Top Millet Grass Seed	bag	\$21.40	3.5	\$74.90
Water	gallon	\$0.01	2,000	\$20.00
Pin Flag	each	\$0.06	11.0	\$0.66
Quikrete Concrete	bag	\$3.19	2.0	\$6.38
16ft Gate	each	\$138.03	1.0	\$138.03
4x4x8 Post	each	\$6.27	2.0	\$12.54
Debris Disposal	ton	\$33.00	58.8	\$1,940.73
Gas	gallon	\$2.54	133.5	\$339.09
Diesel	gallon	\$2.61	840.0	\$2,192.40
Labor	hours		749.5	\$16,518.56
Indirect Labor, Services, and Supplies				\$11,531.07
Total Cost of Materials, Rental Equip., and Labor				\$35,326.01

Note: Labor cost includes the employee's salary plus fringe benefits.

Site Photographs

Before



During



After



Fair Road and Riley Road Project Summary Con't

Project #: 2010-194

Item	Asset No.	Cost/Hour	Hrs.	Cost
Shinn Cutter	22943	\$35.74	4.0	\$142.96
Volvo 290 Excavator	22870	\$54.13	29.0	\$1,569.77
CAT 325 Excavator	16649	\$22.84	3.0	\$68.52
Dresser/Dozer	17014	\$23.48	3.0	\$70.44
New Holland Loader (RDN)	19968	\$47.93	4.0	\$191.72
JD Loader 444J	23271	\$29.75	13.0	\$386.75
Bobcat T300	22847	\$20.10	14.0	\$281.40
Bobcat T320	23388	\$21.00	36.0	\$756.00
Bush Hog	22822	\$38.64	7.5	\$289.80
Bush Hog	23362	\$29.88	6.5	\$194.22
Lowboy	23118	\$34.64	8.0	\$277.12
Hydroseeder	23474	\$12.44	5.0	\$62.20
Dump Trucks		\$13.31	180.0	\$2,395.80
Pickup Trucks		\$4.12	290.5	\$1,196.86
Total Equipment Cost				\$7,883.56

Cost/hour excludes fuel cost.

Total Cost: \$43,209.57

Site Photographs

During



After



Project: Fair Road and Riley Road Map 1

Activity: Drainage Maintenance

Project #: 2010-194

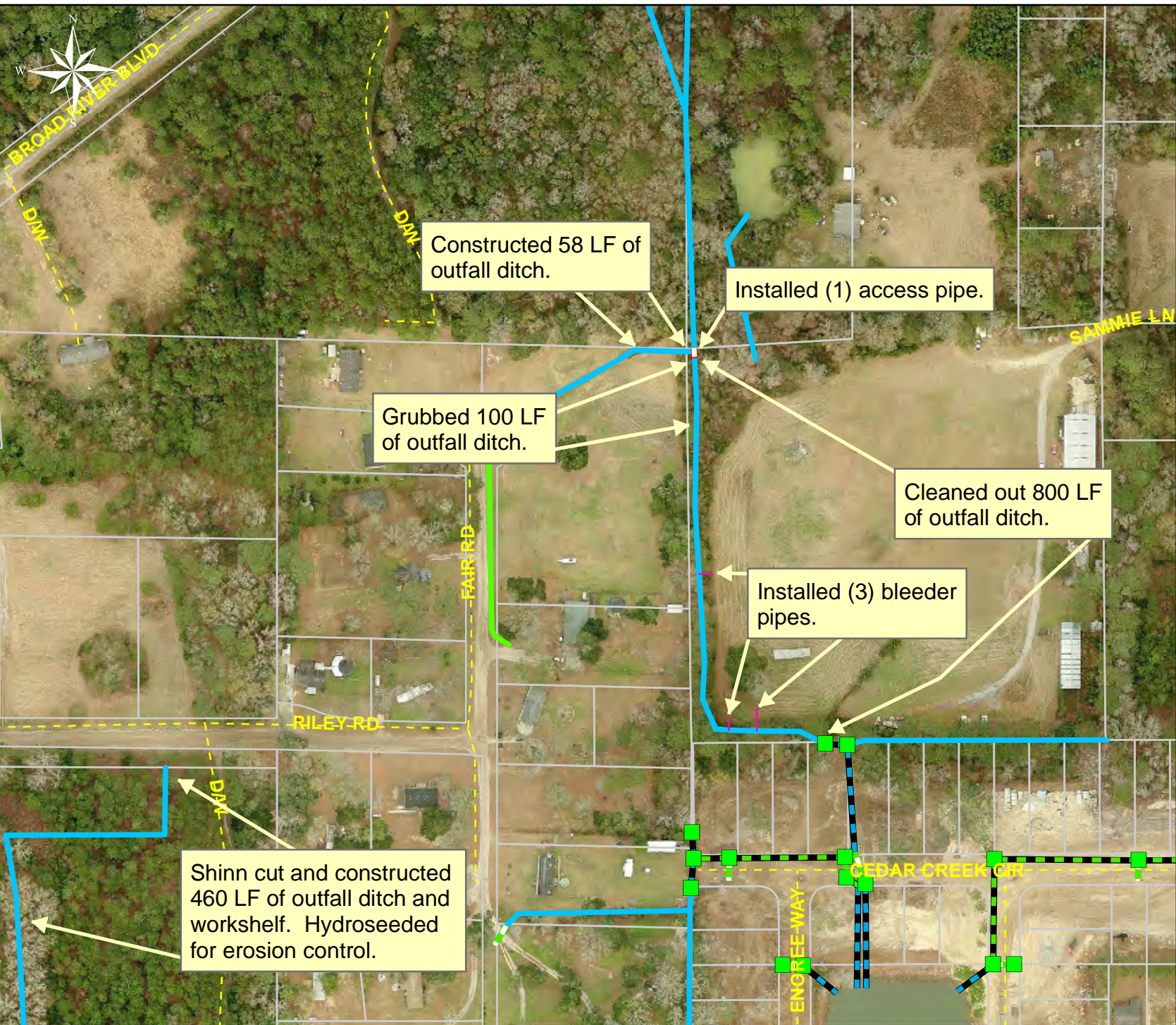
Township: Port Royal Island

Completed: July 2010

Legend

Drainage Type

- River
- Stream
- Outfall
- Lateral
- Lateral Pipe
- Roadside
- Roadside Pipe
- Crossline
- D/W
- Access
- Piped
- Bleeder
- Parcels



1 inch = 215 feet

Project: Fair Road and Riley Road Map 2

Activity: Bush Hog

Project #: 2010-194

Township: Port Royal Island

Completed: July 2010

Legend

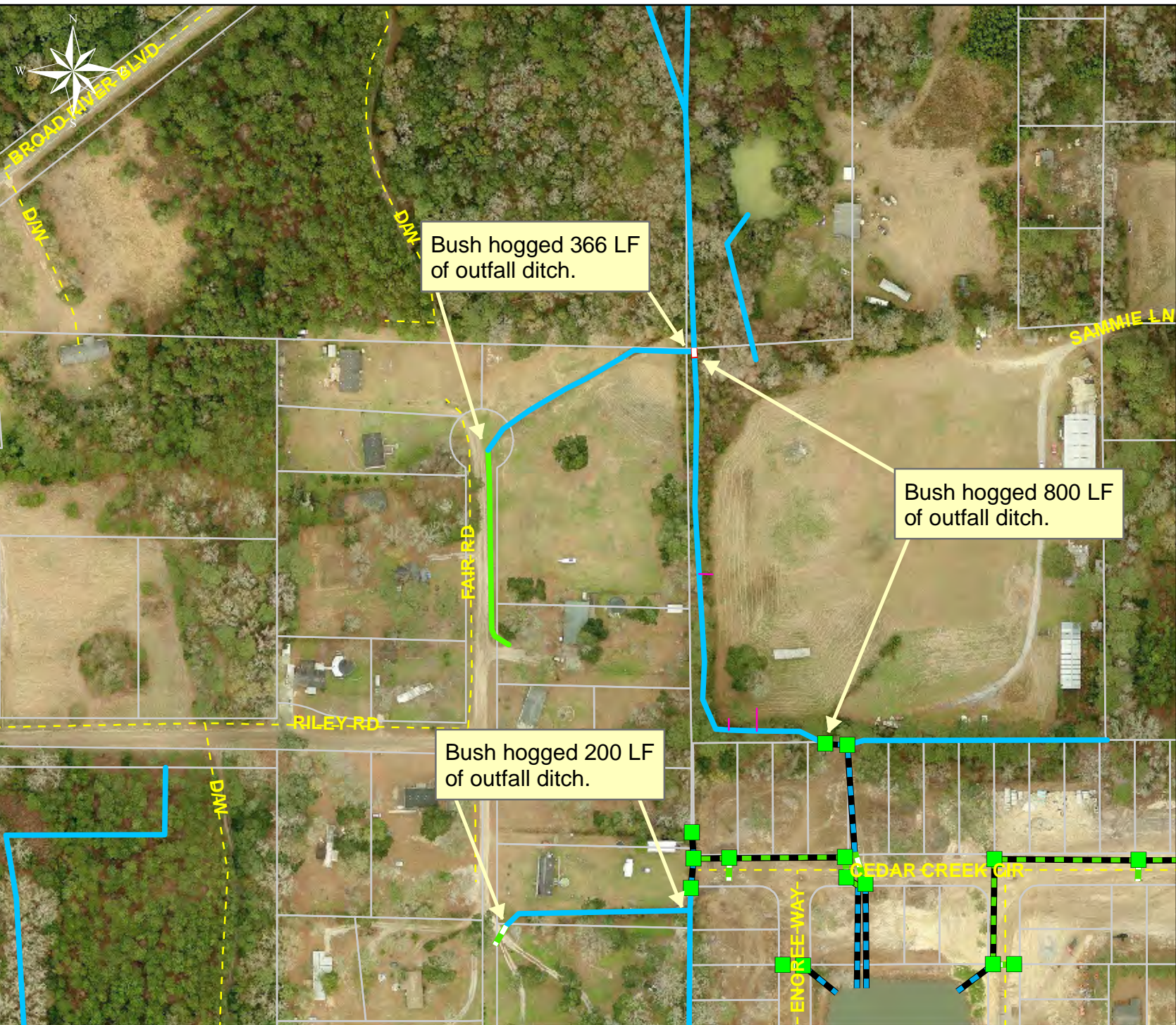
Drainage Type

- River
- Stream
- Outfall
- Lateral
- Lateral Pipe
- Roadside
- Roadside Pipe
- Crossline
- D/W
- Access
- Piped
- Bleeder
- Parcels

Bush hogged 366 LF of outfall ditch.

Bush hogged 800 LF of outfall ditch.

Bush hogged 200 LF of outfall ditch.



1 inch = 215 feet